

Upper Liffey Valley Sewerage Scheme: Newbridge

March 2021

Irish Water is upgrading the wastewater infrastructure in Newbridge to reduce overflows into the River Liffey



Increased wastewater capacity for future growth in the area



Improved water quality in the River Liffey by reducing the risk of overflows during storms



Supports compliance with water quality standards

Introduction

Irish Water is upgrading the wastewater infrastructure in Newbridge as part of the Upper Liffey Valley Sewerage Scheme. Sallins, Clane, Naas and Kill are served by a wastewater network which is no longer fit for purpose. This can cause overflows and flooding during storms. Irish Water is investing over €38 million to solve the problem and to provide additional capacity for future growth in these towns. Coffey Construction Limited is working on behalf of Irish Water to deliver these works.

Irish Water is working proactively with our delivery partners and as part of a multi-agency working group to ensure that our construction works are carried out in a controlled and safe manner, in keeping with Government and HSE guidelines to protect workers, their families and the broader community.

What is happening in Newbridge?

Irish Water is working in partnership with Kildare County Council to upgrade and replace the sewers in several locations in Newbridge. To date, works have been progressing well along the Athgarvan Road/Military Road. We are now moving onto the next phase of works which will involve laying pipework up to the junction of the Athgarvan Road with the R445 Moorefield Road and on Edward Street.

For more information, news and updates please visit www.water.ie



Tionscadal Éireann
Project Ireland
2040

To minimise disruption, the work will be completed in phases and traffic management will be in place. Diversion routes will be clearly signposted, as agreed with Kildare County Council and An Garda Síochána. Where possible, Emergency Access and restricted Local Access will be maintained, including access to local businesses.

The works will involve a combination of stop/go traffic management systems as well as a road closure. A temporary road has been constructed to allow businesses and customers to access businesses in the area. This temporary road starts at the entrance of Lidl and continues to the back of the Newbridge Shopping Centre. This will remain open for the remainder of the works.

What are the benefits of this project?

- The sewer network will have more capacity, which will facilitate future growth and economic development
- Treated wastewater will be cleaner and will meet all regulatory requirements, which will help Ireland avoid substantial EU penalties
- The number of emergency overflows to the River Liffey will be significantly reduced from approximately 12 per year to one per year, weather dependent.
- There will be a reduced risk of flooding in Newbridge, including Páirc Mhuire and Upper Moorefield Road.

When will the upgrade works start and finish?

The works commenced in February 2021 and are expected to be completed in May 2021. Diversion routes will be in place for the duration of the works. The works will be carried out in the following phases.

Please note the following dates are indicative and may change as the works progress:

Phases 1-9 are now complete.

Phase 10A: 15 March – 26 March 2021: Athgarvan Road/ R445 junction.

Works will demobilise over the Easter period and the Athgarvan Road/R445 will fully reopen between 27 March and 6 April. Works will resume on 7 April 2021.

Phase 10B: 7 April – 12 April: Athgarvan Road/ R445 junction.

Phase 11: 13 April – 17 April: Edward Street

Phase 12: 18 April – 26 April: Edward Street

Phase 13: 27 April – 29 April: Edward Street road closure at night

For more information, news and updates please visit www.water.ie



What hours will construction take place?

Works will take place 24 hours a day, Monday to Friday, however, it may be necessary to carry out some weekend works periodically.

Why are these works necessary?

The existing wastewater network is no longer fit for purpose. The system doesn't have sufficient capacity to move wastewater to the treatment plant during storms, and some of the pipes are old and ready for replacement.

There have been storm water overflows at a number of locations, which does not comply with European legislation or Environmental Protection Agency requirements. To increase the capacity of the network we are upgrading three pumping stations and upgrading and replacing existing sewers to ensure they are large enough and in good condition.

Stakeholder Engagement

Irish Water are continuing to engage with residents and businesses in the local area in order to minimise disruption. Our community liaison officer is available to take any queries on 086 387 7875.

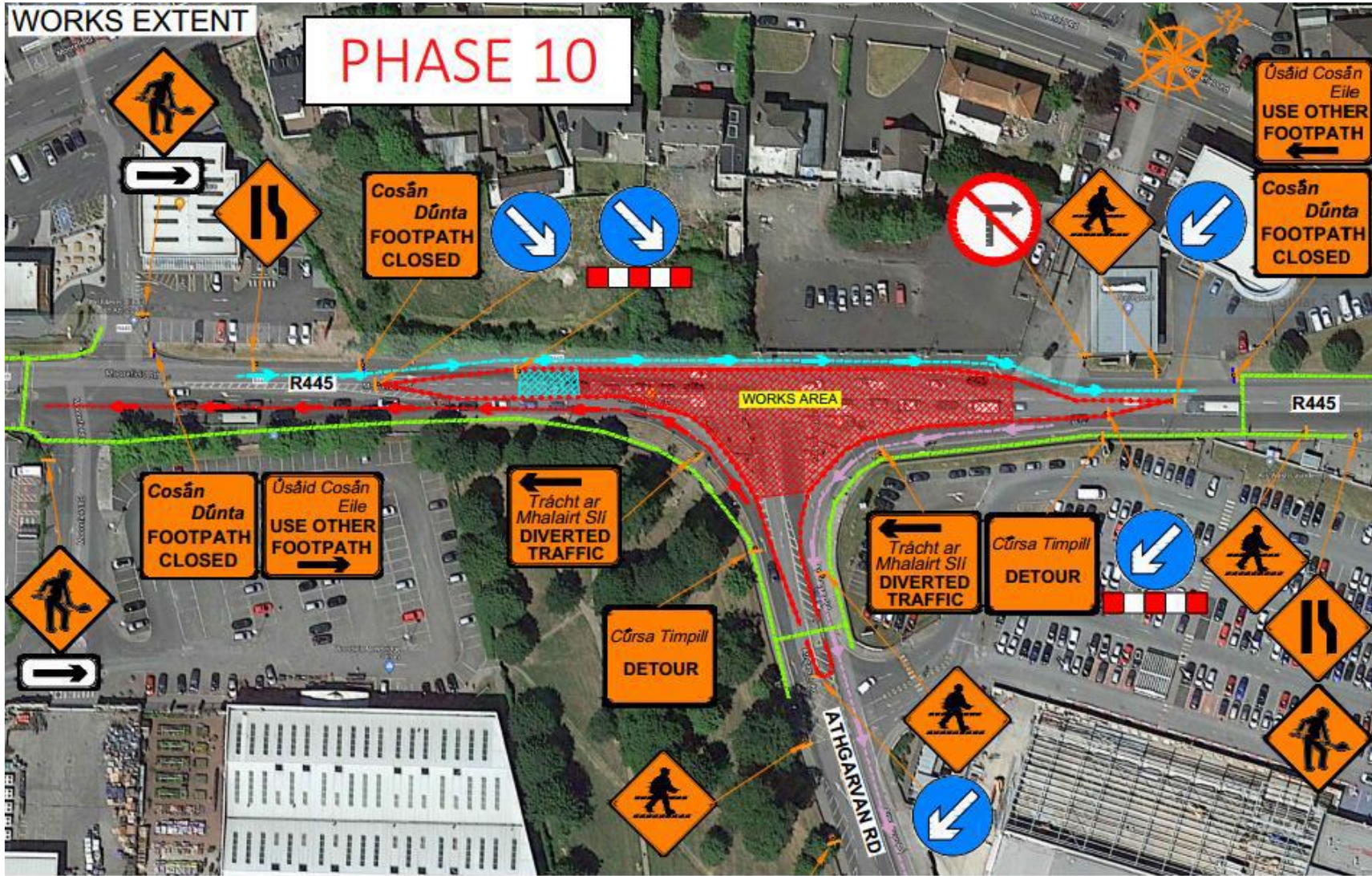
Traffic Management Plans:

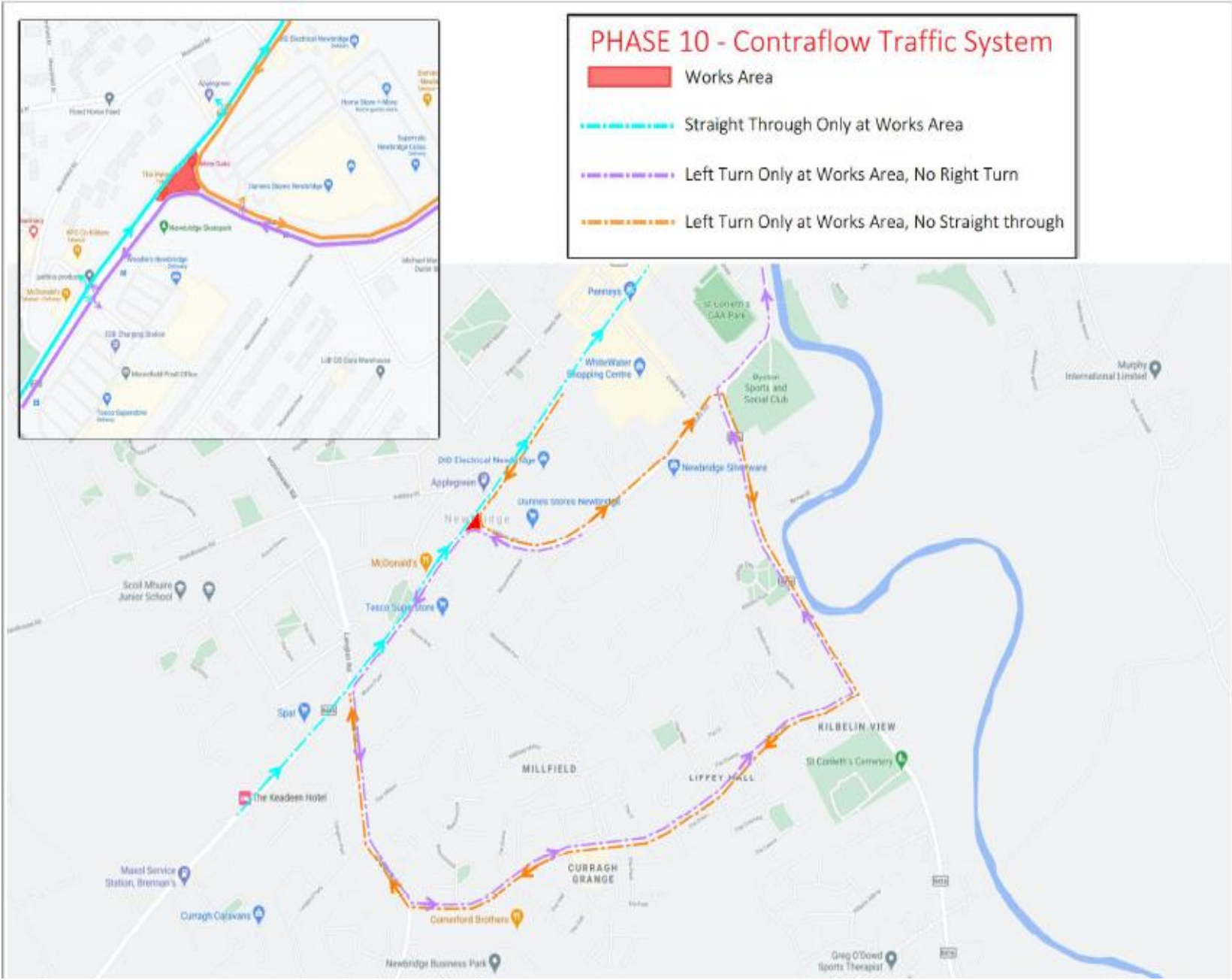
Dates are subject to change depending on a number of factors such as ground conditions and other services such as broadband and water supply.

Further details on planned traffic management be found below and on the Irish Water website via www.water.ie/projects-plans/newbridgewastewaterupgrad/.

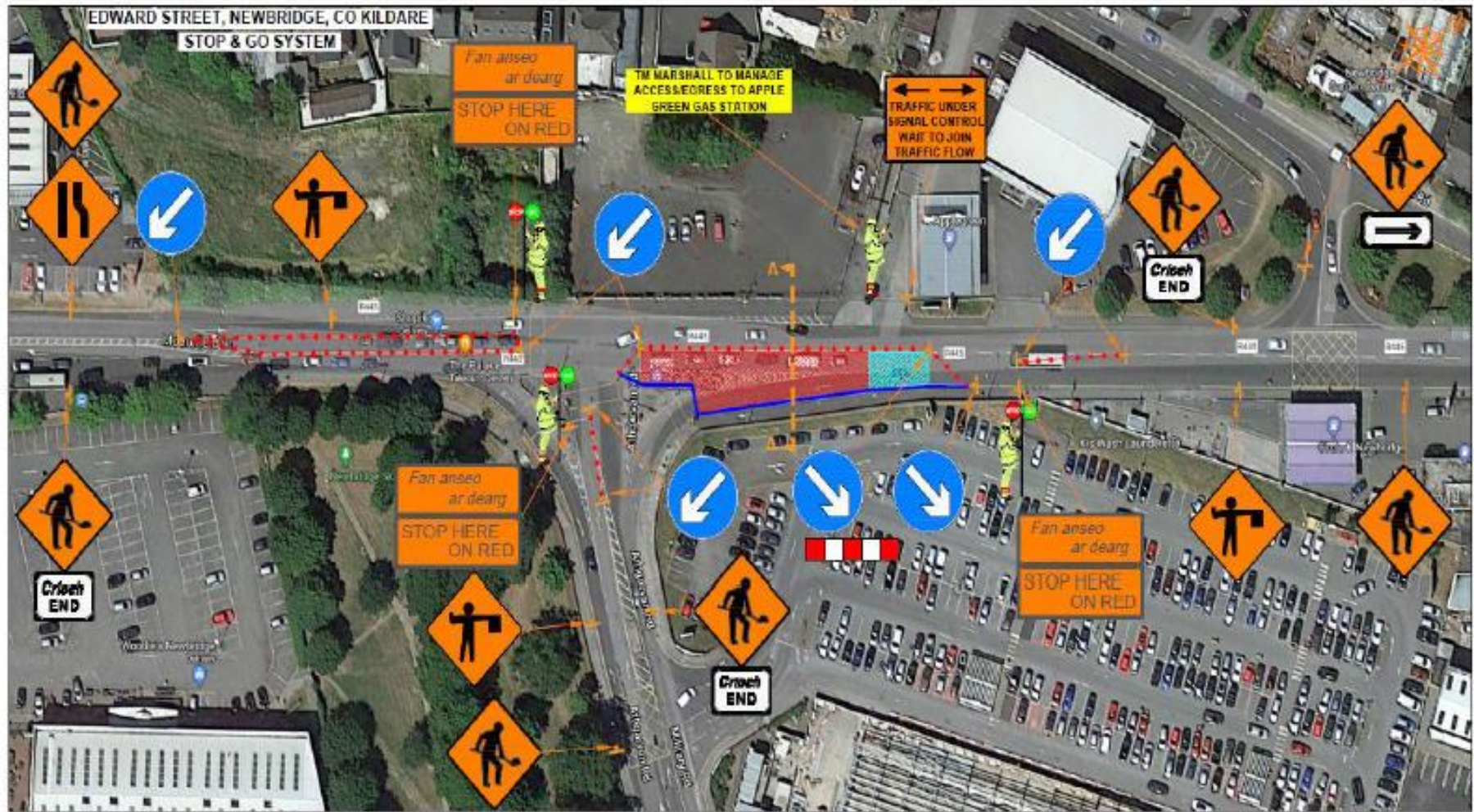
We will endeavour to keep all stakeholders updated as the project progresses.







Edward Street Phase 11



Edward Street Phase 12



Edward Street Road Closure Phase 13 (night time works)

